

KEIsystem

KEI-64S

**DATA
LOGGER
SYSTEM**

Trustworthy Marine Computer System

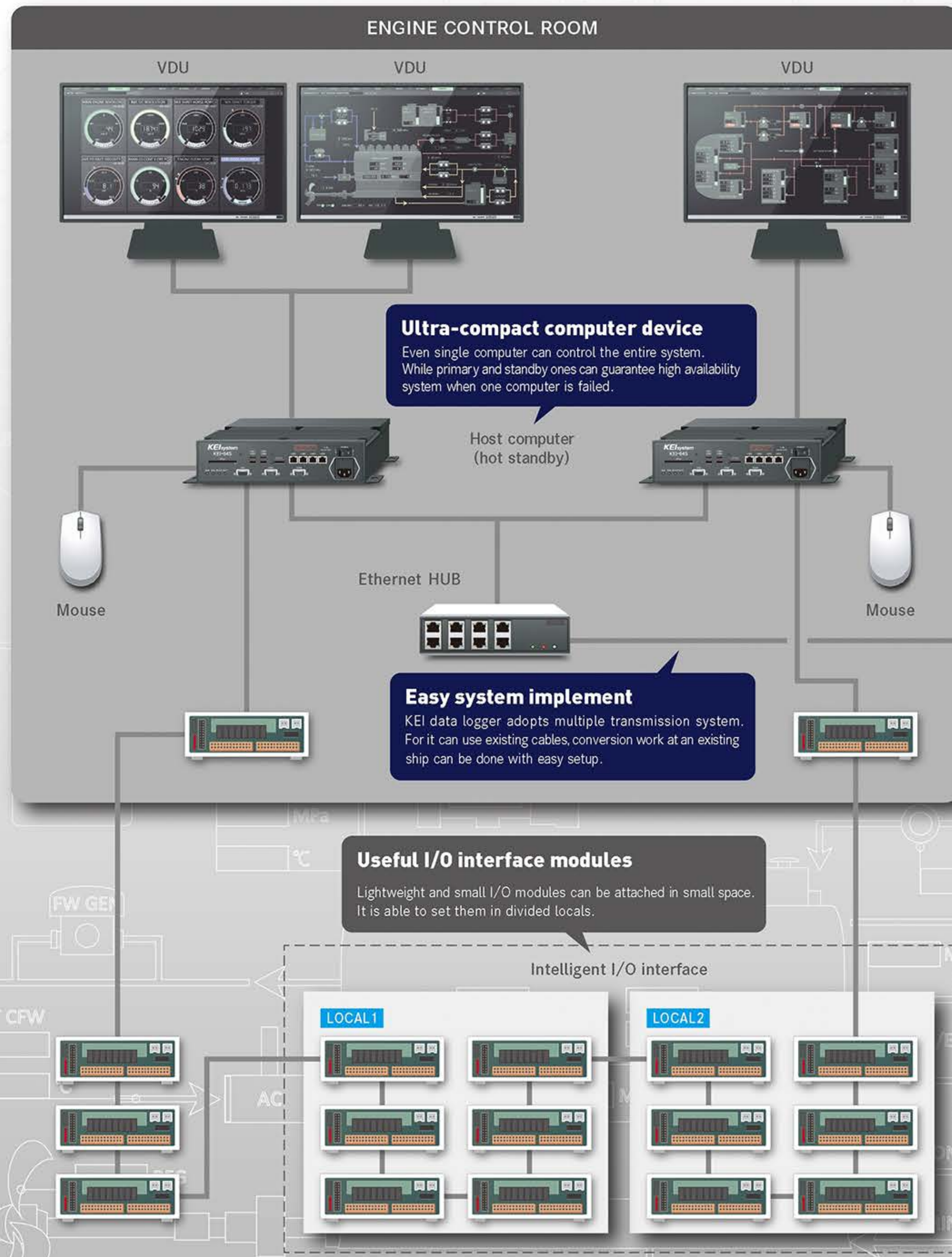
LR,NK,ABS,DNV-GL

Type Approved

NEXT GENERATION SYSTEM

NEXT GENERATION DATA LOGGER SYSTEM

KEI-64S Data Logger System Configuration



KEI-64S Data Logger System New Features

DISPLAY

new

Renewed Screen Design

Simple and beautiful display provides a better grasp of device status.

- Square and widescreen (Full HD: 1920 × 1080) -capable.
- Equipped with duplicate screen and multiple windows functions.

SOFTWARE

new

Useful New Functions

Improved user interface enables comfortable operation and more detailed trouble analysis.

- Developed diagnosis function enables you to analyze trouble causes from various points of view.
- 4 alert points can be set for a monitoring CH.
- Equipped with real-time trend and alert trend. When an abnormality occurs, all monitoring CH data(digital & analog) between before and after the time is saved automatically.
- Screenshot function enables you to save screen captures in USB flash drives.

NETWORK

new

Flexible System Configuration

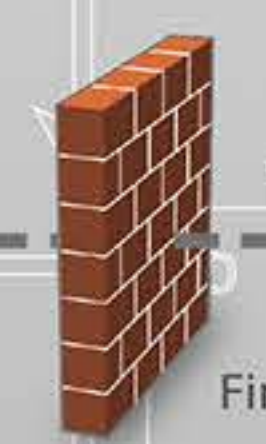
Increased I/O ports provide you with various network configurations.

- Multi-network is available (4CH LAN ports). You can divide the system network to reduce a risk of trouble.
- Division of network enables the system to have more I/O modules than the previous model. Large-scale system is feasible.

Flexible network configurations
Ethernet (10BASE-T/100BASE-TX/1000BASE-T), serial (RS232C) and USB ports provide you with various system configurations. Like Laptop PC and alarm /log printer, varied devices which customers request can be connected.



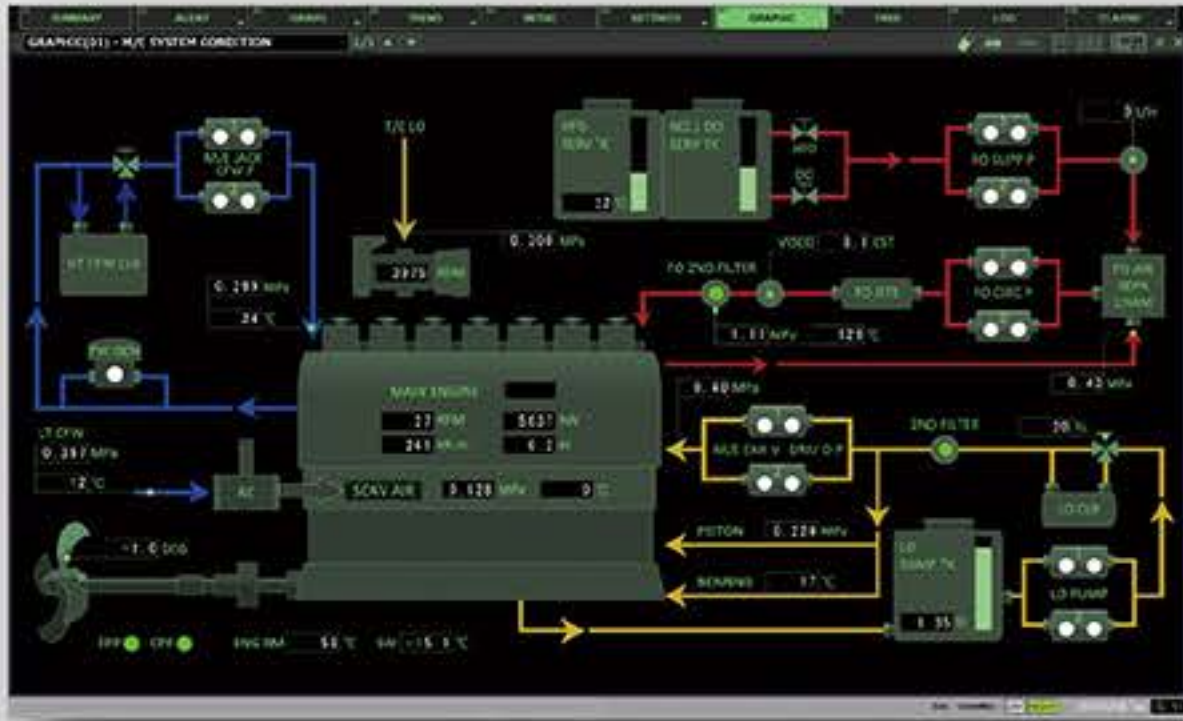
Print & media storage
Monitoring data can be saved in USB storage in a special format, like noon log or alert history. The system supports printing of a screen capture by log printers.



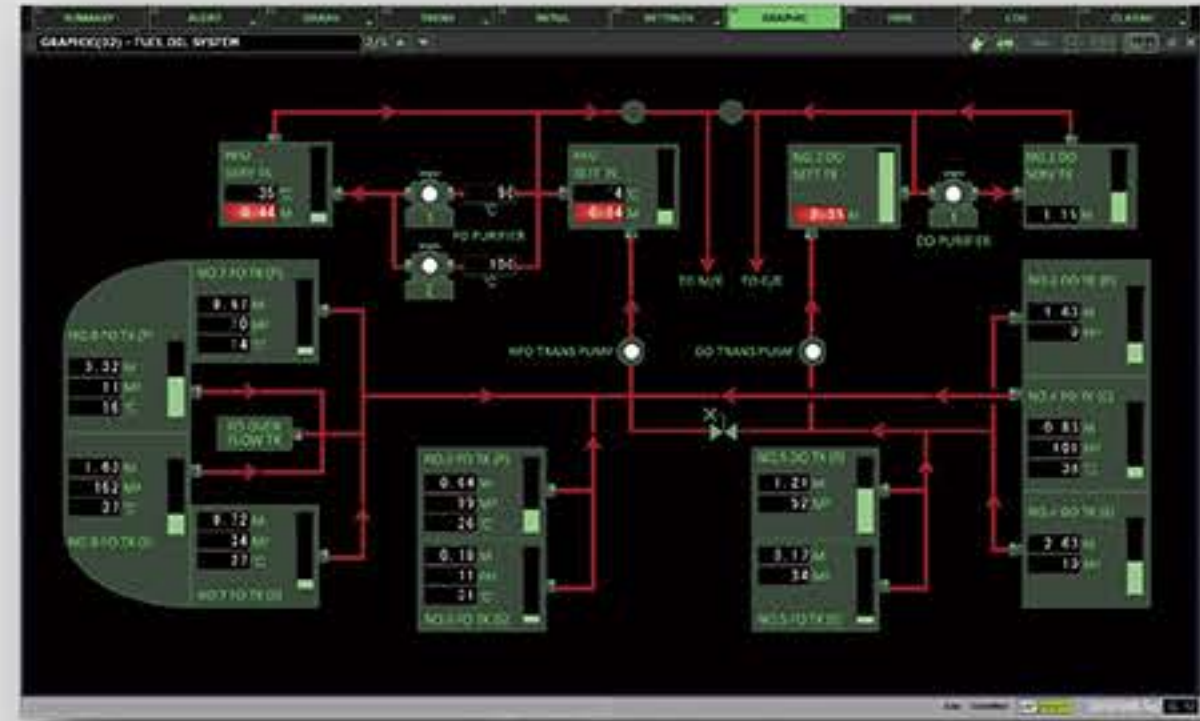
Shipboard LAN data server

KEI-64S Data Logger System Sample Screens

■ Mimic Graphic (1)



■ Mimic Graphic (2)



■ Summary Display



■ Real-Time Trend Display



■ Bar Graph Display



■ Meter Display



FPP ○ CPP ○ ENG RM [] °C SW [] °C

KEI-64S Features

DISPLAY

Upgraded user interface provides you with marvelous viewing.
You can easily grasp device conditions through your monitors.

- Equipped with zooming in/out display function.
- Square and Widescreen(Full HD:1920 x 1080)-capable.

FUNCTION

With new functions reflecting customers' requests,
improved software enables comfortable operation.

- Equipped with multi-monitor and window features.
- You can easily switch screen designs via DAY/NIGHT mode.
- Screenshot function is useful in case of trouble.

NETWORK

More flexible system configurations are realized
with various I/O ports.

- Multi-network is available (4ch LAN ports).
You can divide a system network to reduce a risk of trouble.

KEI-64S Hardware Specification

Item	Content	Detail
Processor	Maker / Series / frequency	Intel / BayTrail / 1.33GHz Dual Core
Memory	Main Memory	SO-DIMM 2GB (Max 4GB)
Storage	mSATA(internal) CFast	×1, SATAII(3Gbps) SLC, 16GB(standard) ×1, SATAII(3Gbps)(option)
I/O	Display Ethernet USB2.0 Serial Port	×1ch, DisplayPort(Adapters enable HDMI/DVI connections.) ×1ch, analog VGA ×4ch, 10/100/1000Base-T ×4ch, USB2.0 High / Full Speed ×2ch, RS232C D-sub 9pin
Software	OS Support	Microsoft Windows Embedded Standard 7
Power Requirements	Power Consumption Input Voltage	Typ: 10W AC100/220V, DC24V
Dimensions	Size Weight	[W]264×[D]206×[H]69mm About 3.8kg
Operating Environment	Operating Temperature Storage Temperature Humidity RoHS2	5~55℃ -10~70℃ 95%RH or less (non condensing) Adapting (Not includes substances regulated by RoHS2)
Certification	Type Approval	NK, LR, DNV GL, ABS