

KEIsystem

KEI-64S

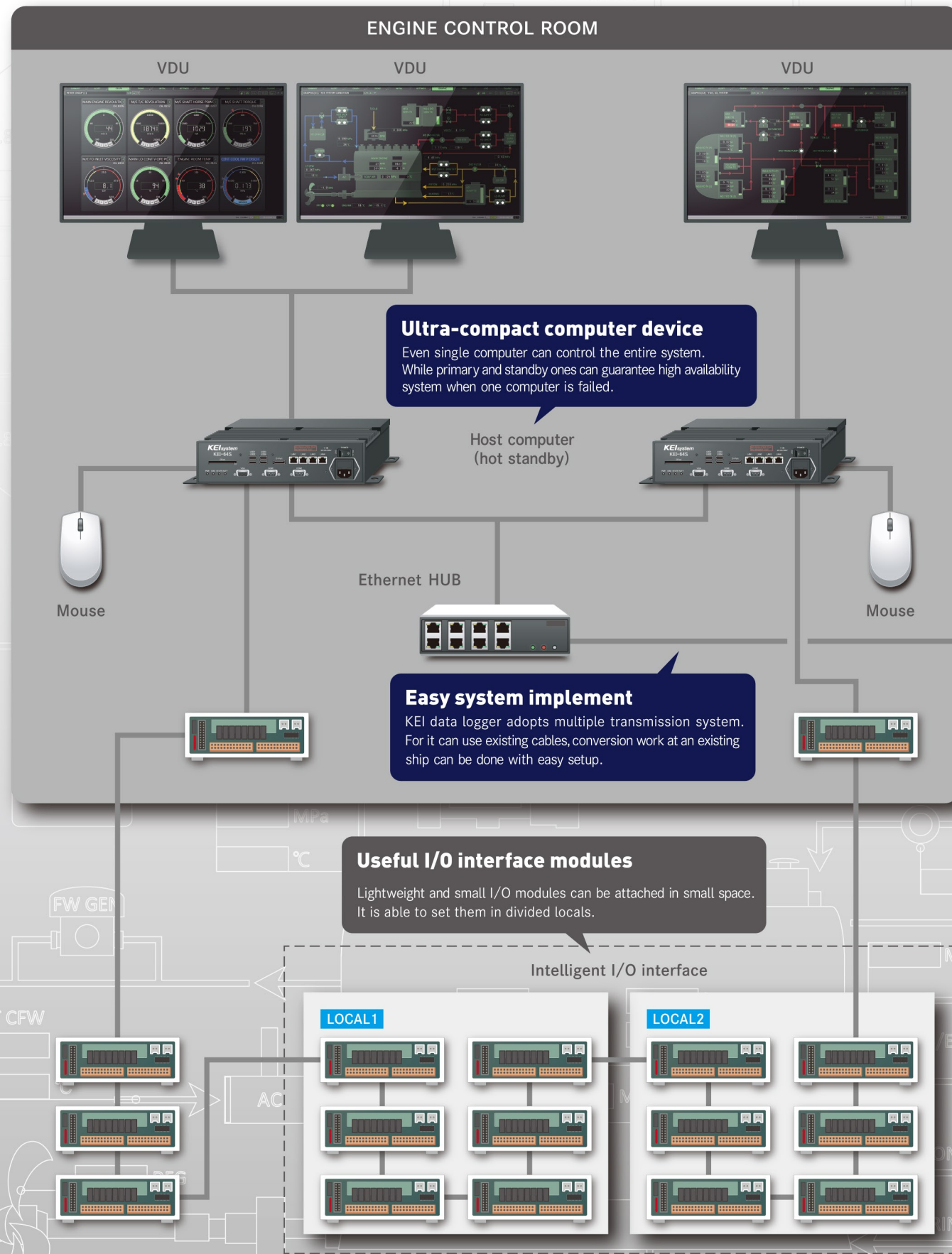
**DATA
LOGGER
SYSTEM**

Trustworthy Marine Computer System

LR,NK,ABS,DNV-GL,CCS Type Approved

NEXT GENERATION DATA LOGGER SYSTEM

KEI-64S Data Logger System Configuration



KEI-64S Data Logger System New Features

DISPLAY
new

Renewed Screen Design

Simple and beautiful display provides a better grasp of device status.

- Square and widescreen (Full HD:1920×1080)-capable.
- Equipped with duplicate screen and multiple windows functions.

SOFTWARE
new

Useful New Functions

Improved user interface enables comfortable operation and more detailed trouble analysis.

- Developed diagnosis function enables you to analyze trouble causes from various points of view.
- 4 alert points can be set for a monitoring CH.
- Equipped with real-time trend and alert trend.
When an abnormality occurs, all monitoring CH data(digital & analog) between before and after the time is saved automatically.
- Screenshot function enables you to save screen captures in USB flash drives.

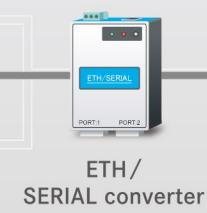
NETWORK
new

Flexible System Configuration

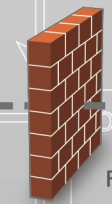
Increased I/O ports provide you with various network configurations.

- Multi-network is available (4CH LAN ports).
You can divide the system network to reduce a risk of trouble.
- Division of network enables the system to have more I/O modules than the previous model. Large-scale system is feasible.

Flexible network configurations
Ethernet (10BASE-T/100BASE-TX/1000BASE-T), serial (RS232C) and USB ports provide you with various system configurations. Like Laptop PC and alarm / log printer, varied devices which customers request can be connected.



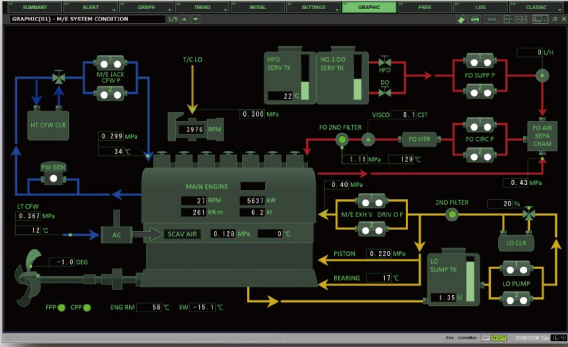
Print & media storage
Monitoring data can be saved in USB storage in a special format, like noon log or alert history. The system supports printing of a screen capture by log printers.



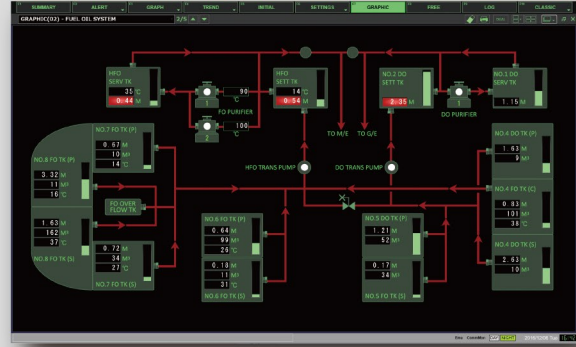
Shipboard LAN data server

KEI-64S Data Logger System Sample Screens

■ Mimic Graphic (1)



■ Mimic Graphic (2)



■ Summary Display

CHNo	CHName	Current	Min	Max	UNIT	ALERT
0001	M/E SCAV AIR PRESS	0.380			MPa	
0002	M/E FO IN PRESS	0.03		0.30	MPa	
0003	M/E FO AIR SEPA CHAMBER PRESS	0.07		0.30	MPa	
0004	M/E FO DISCH FILTER DIFF P	NORMAL				
0005	M/E BRU LO IN PRESS	0.060		0.100	MPa	
0006	M/E T/C LO IN PRESS	0.250		0.300	MPa	
0007	M/E LO DISCH FILTER DIFF P	NORMAL				
0008	M/E JACKET COOL FW IN PRESS	0.430		0.530	MPa	
0009	M/E LT COOL FW IN PRESS	0.040		0.030	MPa	
0011	M/E START AIR PRESS	0.01		0.08	MPa	
0012	M/E CONTROL AIR PRESS	NORMAL				
0013	M/E EXH VALVE LO IN PRESS	0.83		0.25	MPa	
0014	M/E EXH V SPRING AIR PRESS	0.13			MPa	
0015	M/E EXH V SPRING AIR PRESS	NORMAL				

■ Real-Time Trend Display



■ Bar Graph Display



■ Meter Display



FPP ○ CPP ○ ENG RM °C SW °C